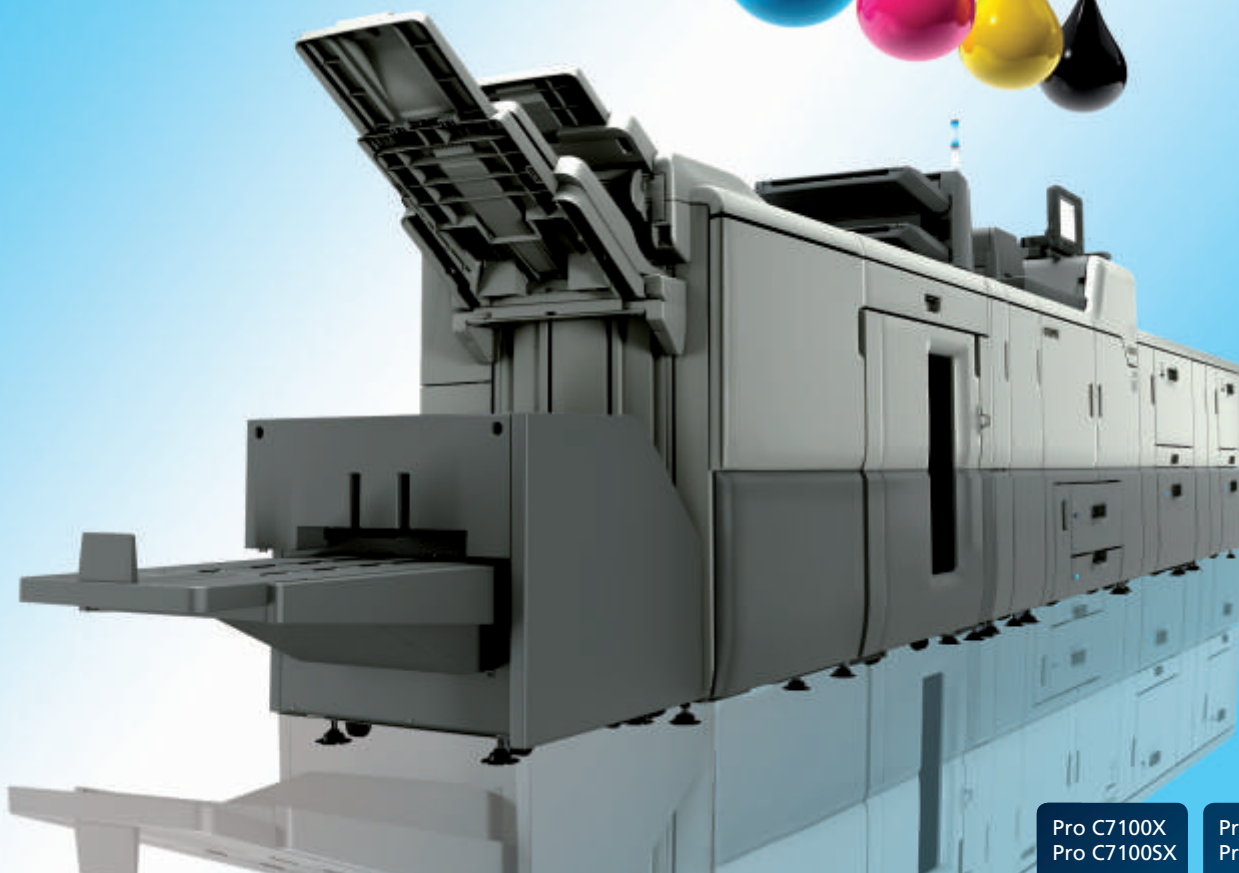


Digital Full Colour Production Printer

RICOH Pro C7100X Series

✓ Copier ✓ Printer ✓ Scanner ✓ 5th Station

RICOH
imagine. change.



Pro C7100X
Pro C7100SX

80
ppm
Colour
B/W
White/Clear

Pro C7110X
Pro C7110SX

90
ppm
Colour
B/W
White/Clear

Add value, increase performance

Today's printing industry has undergone a revolutionary change. Customers, both internal and external, are seeking diverse and unique outputs, as well as new revenue streams to their businesses. They demand tight delivery times on short length runs, as well as competitive pricing to maximise profitability.

The RICOH Pro C7100X series serves to be the ideal solutions; offering a wide variety of applications, and further extending offerings with 5th colour opportunities.

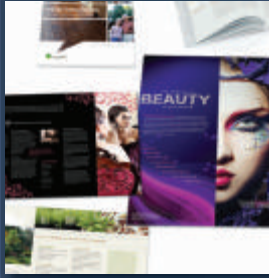
The new series complements offset printers in terms of image quality and offers high productivity, with the added feature of allowing one to print in clear or white.

Value is added, without compromising performance and profits.

- Offset-like image quality
- 5th colour opportunities with white and clear gloss toner
- Maximised productivity
- Broad paper support
- Hassle-free operation
- Small footprint



Cost efficiency with improved workflow



High image quality

The latest VCSEL technology combined with new toner and advanced image control technology ensure offset-like quality for professional results. Expect high quality, outstanding colour (and mono) output to cut time and costs on shorter run jobs.



Broad paper handling

With versatile paper handling capability, this digital press can support paper weight up to 360 gsm and banner sheet printing up to 700 mm simplex. Advanced toner transfer enables it to print on textured media and capture more jobs.



5th station function

This digital press offers the ability to print additional colours other than CMYK. Clear gloss and white toner provide more value added applications such as spot gloss, flood, and watermarks along with printing on coloured and clear media. Ideal for high-end work and greater impact on a wide range of jobs including annual reports, catalogues, postcards, direct mail, business and invitation cards, posters, packaging and window clings etc.



Ease of operation

An easy-to-access Super VGA operation panel with 10.4 inch colour LCD touch panel allows programme short cuts to be set for frequently used operations. Includes Status Light Pole and Active Tray Indicator so operation can be monitored from a distance, plus 'on the fly' toner replacement to maximise uptime.

Advanced technology for optimum output



High productivity

- RICOH Pro C7100X/Pro C71005X run at up to 80 pages per minute and Pro C7110X/Pro C71105X at up to 90 ppm in colour and B/W on thick stock up to 360 gsm
- Paper handling and print quality are improved by advance toner transfer technology, new elastic fusing belt and advanced image control technology - ensuring colour consistency
- Delivers high productivity in low volume runs helping you meet tight delivery schedules

The latest laser technology

Ricoh's innovative VCSEL technology gives best-in-class resolution of 1,200 x 4800 dpi, creating outstanding image quality. VCSEL has as many as 40 laser beams emitting simultaneously to give exceptionally accurate, smooth and professional image quality.



Uptime maximised

- Liquid cooling system has two positive advantages over air-cooling. It takes up less space, and it makes long operating hours possible, as it does not need pausing when the developer reaches high temperatures
- Operators can replace Trained Customer Replaceable Units (TCRU) units for maximum uptime
- Status Light Pole – can see operational status even from a distance
- Operation panel features animations for ease of use
- 'On the fly' toner replacement enables continuous usage

Simple media setup

- The Media Identification Unit (MIU) is included in Pro C7100X and Pro C7110X as standard
- When scanning media through the MIU, it will display media profiles with similar print setting characteristics from the paper catalogue



Expand your opportunities for success

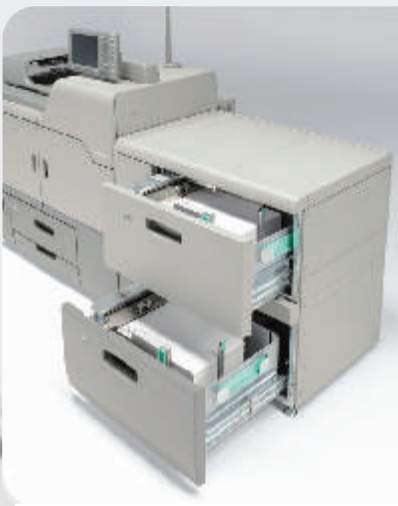


Broad paper support

- Want to start on-demand print business, bring printing in-house or offer your customers a wider proposition? RICOH Pro C7100X series opens up more print opportunities to grow your market share
- Paper weight from 52.3 - 360 gsm is supported
- Textured media support - advanced toner transfer technology ensures superior transferability on textured media
- Banner sheet printing for media size up to 700 mm is supported

5th station value added applications

The introduction of the new 5th station with clear gloss and white toner provides your business with more value added applications for high impact standout on invitations, business annual reports, catalogues, postcards, direct mail, business cards, posters, packaging and window clings. Printing on transparent or coloured media is now possible; resulting in expansion of application portfolio and delivering unique outputs.



Target reliability

With RICOH Pro C7100X series, you can benefit from increased reliability and productivity. It offers a lifetime of 14,400K A4 sheets or 5 years, and a recommended document volume range of 30-140K A4 sheets (maximum 240K A4 sheets).

The power for greater performance



Increased value and competitiveness

- RICOH Pro C7100X Series are equipped with a 5th station to provide an additional clear and white toner in addition to the standard four CMYK colours
- An Adobe Illustrator plug-in tool will be provided in order to create 5th layer to the file. With this plug-in, three different types of coatings are possible



Robust functionality for maximum productivity

Powerful EFI Print Controllers to suit your workflow, featuring the latest Fiery system FS-150 Pro software. With a new user interface and functionality, they offer ease-of-use enhancements that help simplify file management and job workflow for greater efficiency, and maximise uptime. Achieve precise colour matching with other output devices or proofing applications with ColorWise Pro Tools and the Fiery Graphic Arts package.

Increase RIP productivity

The EFI Fiery servers incorporate a high-performance 2.9 GHz up to 3.6 GHz w/Turbo Intel Xeon processor, extended 2 GB x 2 memory and a powerful 1 TB HDD. They enable you to not only handle complex jobs more easily but also support the finishing options that you can offer to be more competitive and profitable.



New options, new opportunities



Vacuum Paper Feed, Large Capacity Input Tray (LCIT) and Bridge Unit (Option)

- Air vacuum feature allows handling of more heavy media with coated surface
- Supports media weight (mainframe-specific) 52 gsm to 360 gsm
- Delivers air to front and sides so each sheet can be delivered by the belt separately
- Offers high level of feeding accuracy for greater productivity for a wide variety of media types and weight
- Up to three units can be attached to the main frame
- Maximum capacity of each tray is 2,200 sheets (80 gsm)
- Maximum capacity per unit is 4,400 sheets (80 gsm)

Banner Sheet Tray (Option)

- Optionally integrated to the upper tray of the Vacuum Paper Feed
- Paper size: 210 - 330 mm x 420 - 700 mm
- Media weight: 52 - 300 gsm
- Up to 1,250 sheet capacity dependent on media thickness
- Tray to support Banner Sheet for the Finisher included

Multi-Bypass Tray (Option)

- The multi-bypass unit has banner sheet tray as an option
- Paper size: 210 - 330 mm x 420 - 1260 mm
- Media weight: 52 - 216 gsm
- Up to 500 sheet capacity dependent on media thickness



LCT and Active Tray Indicator

- The A3/DLT Large Capacity Tray has easy-to-see Active Tray Indicator
- LED lamp on all paper trays informs of status of paper feed which prevents opening of active tray, thus avoiding possible paper jam
- Allows user to know which trays are not in use so they can be refilled for the next job to speed up operation
- Supports up to 330 x 487 mm paper size
- Offers enhanced Paper Feed Capacity
- Air-Assist Paper Feed enables ease of handling of various paper types such as coated paper and paper thickness 52.3 gsm up to 360 gsm

More advantages and benefits



Secured tray for valuable papers*

- Tray can be secured with a lock
- Offers extra security for customers such as banks and security companies handling checks and securities
- Opportunity to provide this service to expand your offering

*selected trays

Standard Finisher and Booklet Finisher (Option)

- Stack capability: Media up to 330 x 487 mm
- Media weight: 52 - 360 gsm
- Up to 3,000 sheets on Shift Tray (A4/LT, 80 gsm)
- 100-sheet staple (B5-A3/215 x 279 - 279 x 431 mm, 80 gsm)
- Book Finisher offers the same stack capacity with 20-sheet booklet (B5-SRA3/215 x 279 - 330 x 487 mm, 90 gsm)
- Booklet Finisher has one-side edge trimmer as an option
- Enables creation of professional booklets



Multi-Folding Unit (Option)

- Offers six options for paper folding
- Supports media from 64 gsm to 105 gsm including coated paper
- For 2-fold, 3-fold in and 3-fold out, multi-pages folding is available up to three pages from 64 - 89 gsm
- Precise adjustment of folding position can be done from operation panel

Save time, speed up production

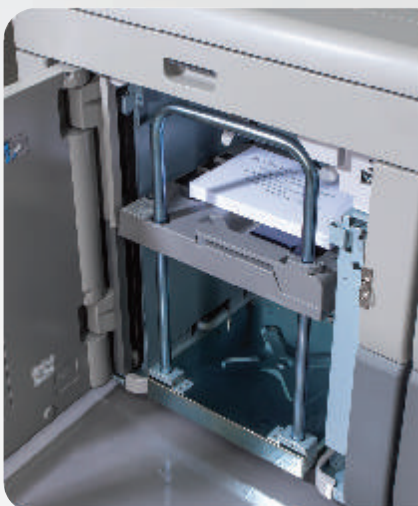


Paper Decurl Unit (Option)

- Optional Paper Decurl Unit uses two paths to deal with concavity and convexity curls
- It prevents the common problem of curling paper in colour especially when printing with high toner coverage, thin paper, and paper with long grain

Buffer Pass Unit (Option)

A total of eight fans inside the unit, coupled with the length of the paper path at 144 cm, prevent toner adhesion/sticking as the printed paper is cooled down before it is stacked inside the High Capacity Stacker or Finisher Shift tray.



High Capacity Stacker (Option)

- This new option stacks up to 5,000 sheets (SRA3, A4, LT size) on shift tray and 250 sheets on one-proof tray
- Up to two stackers can be attached
- Includes roll-away cart as standard
- Ensures ease of high volume outputs

The options for success



1 Pro C7100X/ C7110X/ C7100SX/ C7110SX

2 Colour LCD panel

3 5th station function allowing white/clear toner

4 Optional High Capacity Stacker Sk5030

5 Optional Booklet Finisher Sr5060

6 Optional Paper Decurl Unit

7 Optional Buffer Pass Unit

8 Optional 2 Tray Cover Interposer Ci5030

9 Optional Booklet Trimmer Tr5040

10 Optional Vacuum Input Tray
Paper Feed Large Capacity Rt5100

11 Optional Banner Sheet Tray



- Secured tray for valuable papers**
- Standard Finisher SR5050**
- Optional Multi-Folding Unit**
- Optional SRA3 LCT**
- Optional Multi-Bypass Tray**
- Optional Perfect Binder GB5010**

* Optional Decurl Unit is located inside the mainframe and is not visible
** Not illustrated



RICOH Pro C7100X/C7100SX/C7110X/C7110SX

MAIN SPECIFICATIONS

GENERAL

Technology	5-drum dry electrostatic transfer system with internal transfer belt
Fusing:	Oil less belt-fusing method
Print Speed:	C7100X/C7100SX FC/BK 80ppm C7110X/C7110SX FC/BK 90ppm
Print:	Up to 1200 x 4800dpi VCSEL
Warm-up time:	Less than 300 sec.
Dimensions (WxDxH)	1,320 x 910 x 1,218mm
Weight:	(5 Station) Less than 580kg
Power Source:	220-240V, 16A, 50/60Hz
Power Consumption:	Less than 5000W
Duty Cycle:	C7100X/C7100SX :600K C7110X/C7110SX :700K per month

MEDIA HANDLING

Paper Input Capacity	1st stay (std) 1,000 sheets x 2 (Tandem) 2nd tray (std) 500 sheets 3rd tray (std) 1,000 sheets 4th tray (std) 2,000 sheets 3rd-8th Tray (Optional) Vacuum Feed LCT 2,200 sheets each Multi bypass tray 500 sheets (Optional)
Max Printable Area:	323mm x 480mm / 12.7" x 18.9", 323mm x 692mm / 12.7" x 27.2" (Banner sheet tray optional) 323mm x 1260mm / 12.7" x 49.6" (Multi bypass tray optional)
Paper Weight:	1st tray 52-300g/m ² 2nd tray 52-256g/m ² A3/DLT LCT: 3rd tray 52-256g/m ² 4th tray 52-360g/m ² 5th tray 52-256g/m ² Vacuum Feed LCT: 3rd-8th tray 52-360gsm Banner sheet tray: 52-300g/m ² (Optional) Multi bypass tray unit: 6th tray 52-216g/m ² (Optional)

COLOUR CONTROLLER

	E-43A
Configuration:	External
CPU:	Intel i5-4570 (2.9GHz up to 3.6GHz with Turbo)
Memory:	2GB x 2
HDD:	1TB x1 SATA
CD-ROM Drive:	Supported DVD-RW
Operating System	Windows 7 Professional for Embedded Systems x64

OTHER OPTIONS

Ricoh Light High Middle Production Digital Press with optional Vacuum Paper Feed RT5100, Bridge Unit BU5010, Multi-Bypass Attachment Kit for Vacuum Paper Feed Type S3, Vacuum Feed Banner Sheet Tray Type S3, Multi-Bypass Banner Sheet Tray Type S3, Buffer Pass Unit Type S3, High Capacity Stacker SK5030, Decurl Unit DU5040, RPIP Interface Box Type S3, TCRU/ORU Type S3 (Set A), TCRU/ORU Type S3 (Set B), TCRU/ORU Type S3 (Set C), 5th Station Replacement Kit Type S3, PostScript3 Unit Type S3, Developer High-Gloss Clear Type S3, Developer White Type S3.

WORKFLOW SOLUTIONS

EFI™ Digital StoreFront®, EFI™ Color Profiler Suite, EFI™ Fiery® Graphic Arts Package Premium Edition, EFI™ Compose, SeeSequence Impose, SeeSequence Suite, DirectSmile®, EFI™ Fiery® Central, Objectif Lune PlanetPress, PTI FusionPro®, TotalFlow, BatchBuilder, CGS ORIS Lynx & PressMatcher, Ricoh Process Director Express®, Prep, Print Manager, Production Manager

ENVIRONMENTAL INFORMATION

RICOH Pro C7100X/C7110X comply with Energy Star 2.0 standards.

Please Note: Unless stated otherwise the data used in this brochure is based on A4 80gsm Standard Media.



RICOH
imagine. change.

URL: <http://www.ricoh.co.in>

RICOH INDIA LIMITED

CORPORATE OFFICE: 2nd Floor, Salcon Aurum Building, Plot No. 4, District Centre, Jasola, New Delhi-110 025
Tel: (011) 49103000, 49103100, 49103200 Fax: (011) 49103099, 49103199 Email: ril.info@ricoh.co.in SMS: 'RICOH' to 53456
REGISTERED OFFICE: 801, 8th Floor, Akruti Star, MIDC Central Road, Andheri-East, Mumbai - 400 093
Tel: (022) 66833000 Fax: (022) 67032099
Ahmedabad, Bangalore, Bhopal, Bhubaneswar, Chandigarh, Chennai, Coimbatore, Delhi, Gurgaon, Guwahati, Hyderabad, Jaipur, Kochi, Kolkata, Lucknow, Mumbai, Nagpur, Noida, Patna, Pune, Ranchi, Visakhapatnam.

For more information, please contact: